

CUSTOM ROOFTOP CURB ADAPTERS

ROOFTOP UNIT TRANSITIONS

Custom fabricated curb adapters and duct drops for matching new rooftop equipment to existing curbs, duct openings, and roof conditions.

- Used for RTU changeouts, equipment replacements, curb height changes, duct drops, duct opening shifts, and field condition corrections.
- Built to released curb dimensions, unit base dimensions, supply/return openings, duct drop details, height, pitch, and transition requirements.
- Confirm existing curb size, new equipment curb rail layout, duct openings, roof pitch, and installation responsibility before release.

MATERIAL	G90 Galvanized Steel
GAUGE RANGE	20 ga - 10 ga
USE	RTU changeouts

CONSTRUCTION STANDARD

Application	Custom curb adapters and duct drops for rooftop equipment replacements, curb-to-unit transitions, supply/return opening changes, height adjustments, and rooftop HVAC coordination.
Material	Galvanized steel is standard unless another material, coating, or finish is listed on the quote.
Construction	Adapters are fabricated to released dimensions using formed galvanized panels, welded or mechanically joined corners, internal dividers, top rails, bottom flanges, transition panels, and included gasket as required.
Dimensions	Existing curb outside dimensions, new unit rail dimensions, adapter height, duct openings, offsets, and roof pitch should be confirmed before fabrication.
Openings	Supply, return, economizer, exhaust, relief, duct drop, or blank-off openings can be coordinated from drawings, curb templates, or verified field dimensions.
Coordination	Adapters are built from approved drawings, sketches, templates, or field measurements. Equipment selection, roof structure, waterproofing, and installation are by others unless quoted.
Quality check	Curb adapters receive visual inspection before release. Structural engineering, load certification, field fit, or roof warranty acceptance are by others unless quoted.

BUILD QUALITY



Made to spec

Built to released curb, unit, opening, and height dimensions.



Built tough

Formed galvanized construction with reinforcement as quoted.



Quality checked

Adapters receive visual inspection before release.



Changeout ready

Built to help new equipment fit existing curb conditions.

FABRICATION CAPABILITIES

Adapter bodies	Rectangular curb adapters, transition bases, stepped adapters, raised adapters, duct drops, equipment changeout curbs, and custom field-fit adapters.
Transitions	Offsets, tapered sides, pitch corrections, supply/return shifts, duct drops, blank-off panels, and duct opening transitions.
Openings	Supply, return, exhaust, relief, economizer, duct drop, drain, access, or service openings can be fabricated when shown or quoted.
Reinforcement	Internal dividers, braces, bearing rails, top frames, bottom flanges, tabs, brackets, and special support details when requested.
Shop details	Wood nailers, insulation, gasketing, closures, seams, labels, piece marks, and shipping splits as quoted.
Release support	Built from released dimensions, templates, sketches, field measurements, or drawing packages with installation responsibilities clearly identified.

BUILD OPTIONS

Adapter height

Custom heights can be fabricated to coordinate curb clearance, unit base requirements, and roof conditions.

Top frame

Top rails, flanges, bearing surfaces, included gasket, or equipment rail layouts can be built to match the new unit.

Bottom fit

Bottom flanges, returns, pitch details, and existing curb dimensions should match verified field conditions.

Insulation

Insulated curb adapter construction can be quoted when thermal, acoustic, or condensation control is required.

ADAPTER OPTIONS



CHANGEOUT

Old curb to new unit

Adapters to match replacement equipment to existing curb conditions.



DUCT DROPS

Air openings

Supply, return, relief, or exhaust drops coordinated to the curb and unit.



PITCH

Roof correction

Sloped or tapered adapter details where roof pitch or curb condition requires it.



INSULATED

Thermal control

Insulation, liners, or closed sections when specified and quoted.

OPTIONAL ACCESSORIES

Insulation

Insulated panels, liner, rigid insulation, or closed sections where specified.

Included gasket

Gasket is included for standard curb adapter coordination unless a different seal detail is specified.

Wood nailer

Wood nailers, top rails, or roof attachment details when shown.

Custom details

Dividers, blank-off panels, access openings, tabs, brackets, labels, and piece marks.

REQUIRED FOR QUOTE / RELEASE

Existing curb outside dimensions, new equipment rail/base dimensions, adapter height, and quantity.

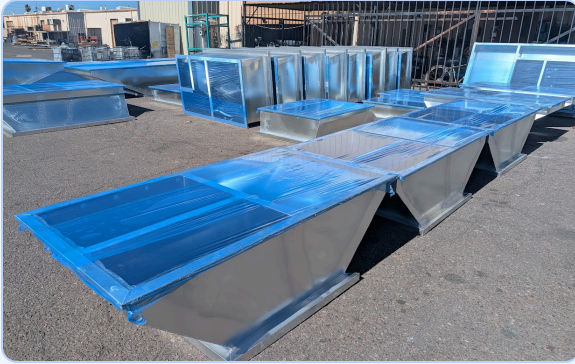
Approved drawing, sketch, equipment submittal, curb template, or verified field dimensions.

Supply, return, exhaust, relief, economizer, duct drop, drain, or blank-off opening locations and sizes.

Roof pitch, curb condition, insulation, gasketing, wood nailer, reinforcement, and attachment requirements.

Material, coating, load/engineering requirements, shipping splits, piece marks, and inspection requirements.

APPLICATIONS & DETAILS



APPLICATION DETAIL

Curb-to-equipment transitions



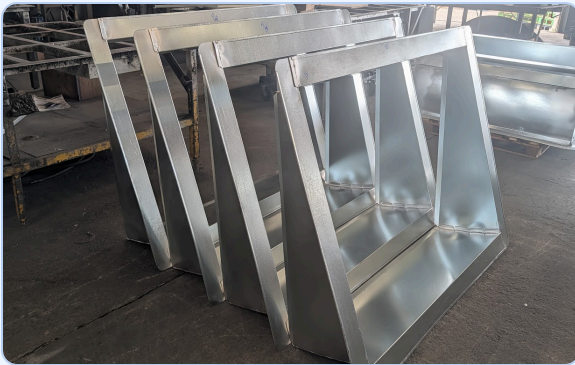
Adapters bridge existing curbs, new equipment footprints, duct drops, and supply or return openings when field conditions do not match. The transition can coordinate offset equipment, revised opening locations, and differing curb dimensions in one fabricated assembly.

APPLICATION DETAIL

Built around the release



Opening sizes, curb dimensions, equipment footprint, height, gasket surface, and duct-drop locations drive the final adapter layout. Verified orientation, roof-side and equipment-side dimensions, and clear opening requirements are critical before release.



APPLICATION DETAIL

Formed and reinforced



Gasket is included; welded, formed, reinforced, pitched, and multi-opening details can be coordinated from drawings or field measurements. Dividers, blank-offs, structural reinforcement, labels, and shipping splits can be incorporated when quoted.

NOT INCLUDED UNLESS QUOTED

- Installation, hoisting, rigging, roofing, roof penetration work, anchoring, or field fastening unless quoted.
- Engineering, structural calculations, permits, inspections, roof warranty coordination, or listed-system certification.
- Equipment selection, load verification, field waterproofing, sealant, hardware, startup, or rework from changed release dimensions unless quoted.

SCOPE & RESPONSIBILITY

Code note: Curb adapters may be governed by equipment submittals, project specifications, roof warranty requirements, structural requirements, mechanical code, local code, and AHJ direction. Empire fabricates adapters to released dimensions and quoted scope; final equipment selection, load path, roof attachment, waterproofing, structural approval, installation method, and field acceptance remain the responsibility of others unless expressly included.

READY TO QUOTE?



Let's get your project moving.

Send drawings, sketches, photos, or field measurements. Empire is ready to go to work for you.

quotes@empiremetalproducts.com

602-424-9980